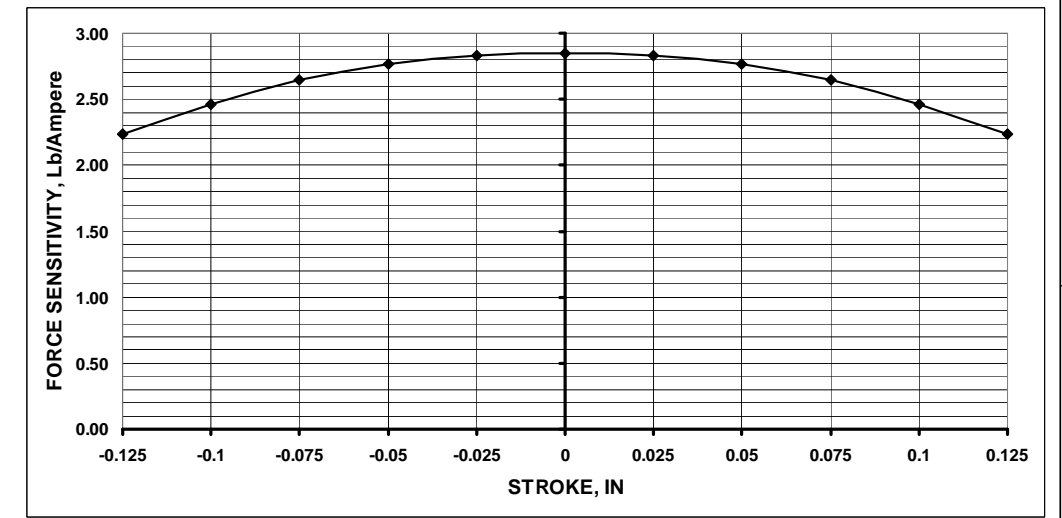
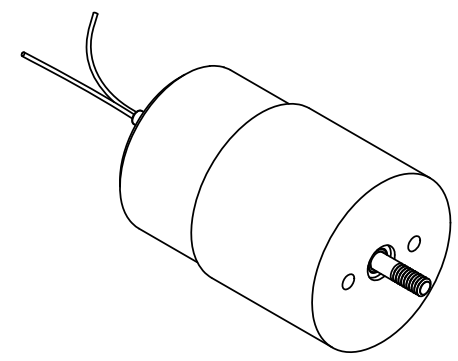


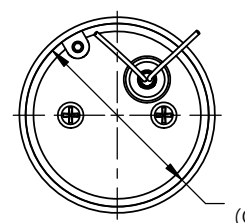
LTR	ECO NO.	DESCRIPTION	DRN	APP'D	DATE
X1	120270	INITIAL RELEASE	RG	MG	12/05/12
X2	130104	UPDATE STALL FORCE & THERMAL RESISTANCE	SLM	MG	04/11/13

Winding Constants *	Units	Tol	Symbol	Wdg	A
DC Resistance	Ohms	± 12.5%	R	4.7	
Voltage @ F _P	Volts	Nominal	V _P	33.0	
Current @ F _P	Amps	Nominal	I _P	7.02	
Force Sensitivity	LB/Amp	± 10%	K _F	2.85	
	N/Amp	± 10%		12.68	
Back EMF Constant	V/(ft/sec)	± 10%	K _B	3.86	
	V/(m/sec)	± 10%		12.68	
Inductance ****	micro-Henry	± 30%	L	1.25	

Linear Actuator Parameters *	Units	Symbol	Value
Peak Force **	LB	F _P	20.0
	N		89.0
Continuos Stall Force ***	LB	F _{CS}	3.82
	N		17.0
Actuator Constant	LB/√Watt	K _A	1.31
	N/√Watt		5.83
Electrical Time Constant	micro-sec	τ _E	270
Mechanical Time Constant	milli-sec	τ _M	1.46
Theoretical Acceleration	ft/sec ²	α _T	5851.6
	m/sec ²		1783.6
Max Theoretical Frequency @ Full Stroke and Sinusoidal / Triangular Motion	Hz	f _{max}	119.3/132.5
Power I ² R @ F _P	Watts	P _P	232
Stroke:	± in		0.125
	± mm		3.18
Clearance on Each side of Coil	in		0.018
	mm		0.46
Thermal Resistance of Coil	°C/Watt	θ _{TH}	10.2
Maximum Allowable Coil Winding Temp	°C	Temp	155
Weight of Coil Assembly	OZ	WT _C	1.76
	g		49.9
Total Weight	OZ	WT _T	10.4
	g		295.2

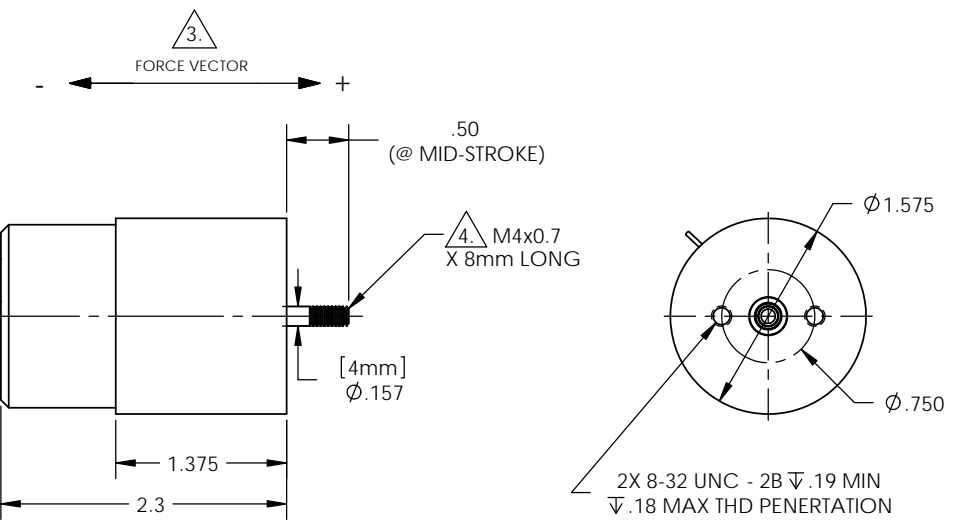


* AT MID-STROKE POSITION AND @ 25 °C AMBIENT TEMPERATURE
 ** 10 SECONDS @ 25 °C AMBIENT & 155 °C COIL TEMPERATURE
 *** @ 25 °C AMBIENT & 155 °C COIL TEMPERATURE
 **** MEASURED AT 1000 Hz.



2X VOICE COIL LEADS:
 #26 AWG TEFLON TYPE E
 12.0" MIN LONG EACH
 RED, BLK

Ø 1.475
 (OVER ENCLOSURE)



(DASH)	SHAFT END CONFIGURATION
-4S	4mm Diameter
-4E	4mm Diameter, External Thread M4x0.7 X 8mm Long

4. -4E SHAFT CONFIGURATION SHOWN.

3. A POSITIVE (+) VOLTAGE APPLIED TO THE RED LEAD WILL PRODUCE A FORCE ON THE COIL ASSEMBLY (SHAFT) IN THE POSITIVE (+) DIRECTION.

2. INTERPRET DRAWING IAW Y14.100.

1. INTERPRET DIMENSIONING AND TOLERANCING IAW ASME Y14.5M-1994.

NOTES: UNLESS OTHERWISE SPECIFIED

THESE COMMODITIES, TECHNOLOGY OR SOFTWARE IF EXPORTED FROM THE UNITED STATES SHALL BE IN ACCORDANCE WITH THE EXPORT ADMINISTRATION REGULATIONS. DIVERSION CONTRARY TO U.S. LAW IS PROHIBITED

Proprietary rights of BEI Kimco are involved in the subject matter of this material and all manufacturing, reproduction, use, and sales pertaining to such subject matter are expressly reserved. This confidential and proprietary document is submitted for a specified purpose, and the recipient by accepting this material agrees that this material will not be used, copied, or reproduced in whole or in part nor its contents revealed in any manner or to any person except to meet the purpose for which it was delivered.

THIRD ANGLE PROJECTION

UNLESS OTHERWISE SPECIFIED:
 -ALL DIMENSIONS ARE IN INCHES
 -BREAK SHARP EDGES .015 MAX
 -SURFACE ROUGHNESS 63 ✓
 -DIMENSIONS APPLY AFTER FINISH
 -MAX FILLET R.010
 -DIAMETERS SHALL NOT EXCEED A RUNOUT OF .005 FIM

TOLERANCES:
 DECIMALS ANGULAR
 .X ±.03 ±0°30'
 .XX ±.01
 .XXX ±.005
 DO NOT SCALE DRAWING

BEI KIMCO MAGNETICS DIVISION
 VISTA, CA 92081

ROHS

DRAWN	DATE	TITLE
GUERRERO	11/20/12	LINEAR ACTUATOR HOUSED
CHECK	DATE	
McGHEE	11/29/12	
APPD	DATE	SIZE
GODKIN	12/05/12	C
FILE NO.	FSCM NO.	DWG NO.
L\TOP\LAH\	55789	LAH16-23-000A-DASH
SCALE: NONE	REV	X2
	SHEET: 1 OF 1	