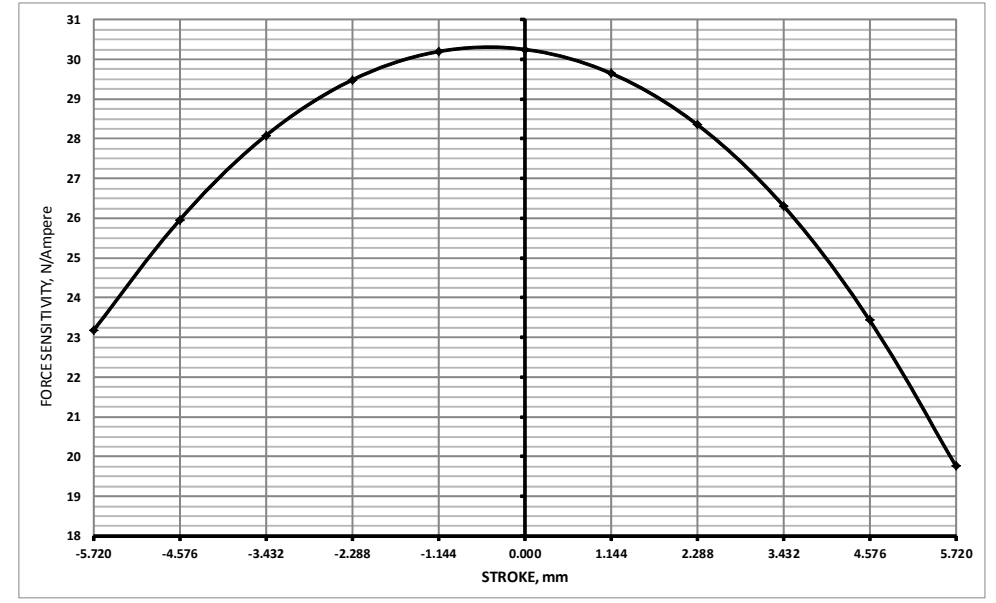


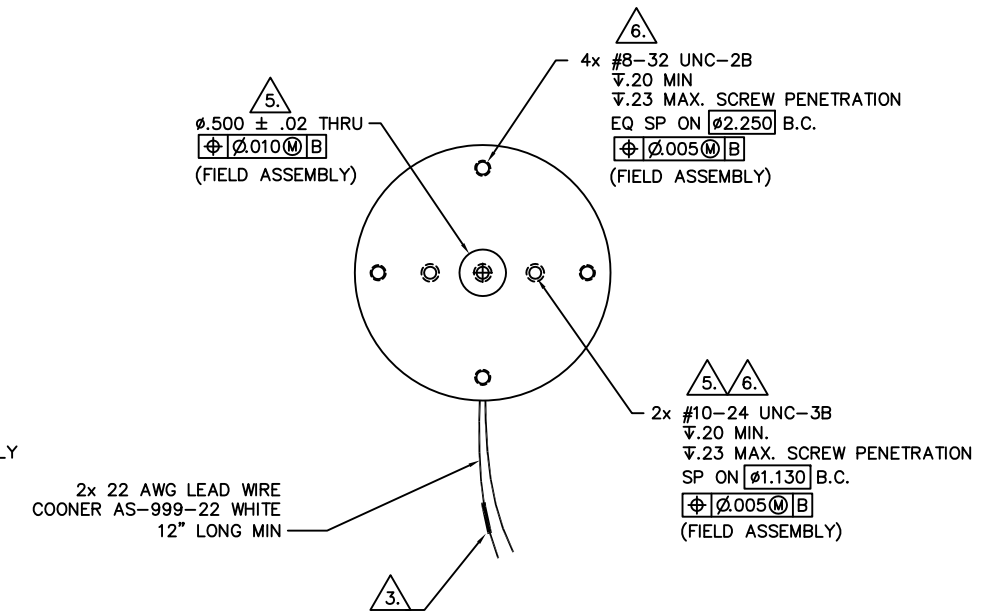
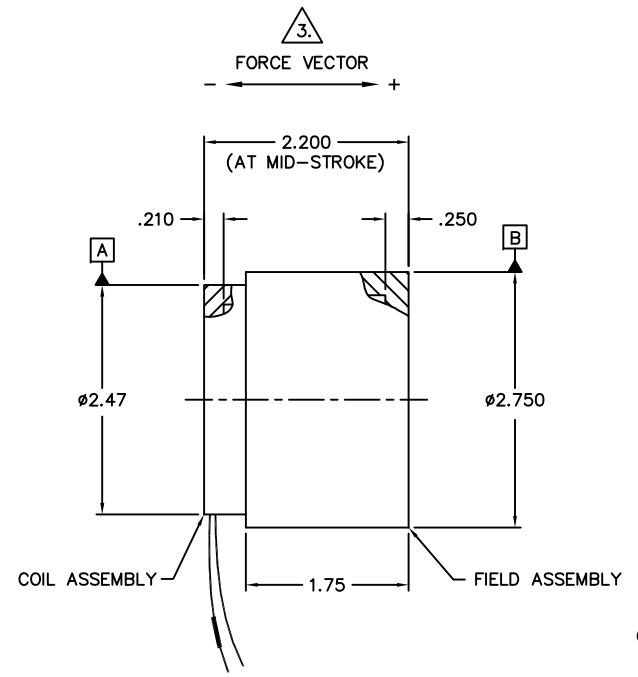
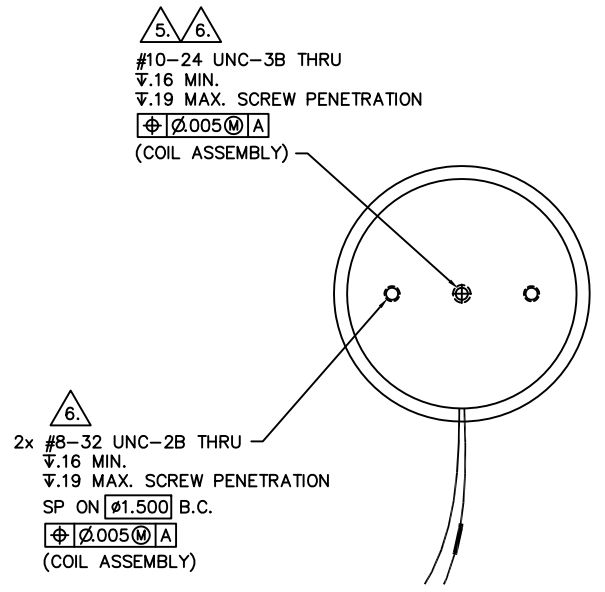
WINDING CONSTANTS *	UNITS	TOL	SYMBOL	WDG A
DC RESISTANCE	OHMS	±12.5%	R	4.8
VOLTAGE @ F <sub>p</sub>	VOLTS	NOMINAL	V <sub>p</sub>	42.4
CURRENT @ F <sub>p</sub>	AMPERES	NOMINAL	I <sub>p</sub>	8.82
FORCE SENSITIVITY	LB/AMP	±10%	K <sub>F</sub>	6.8
	N/AMP	±10%		30.25
BACK EMF CONSTANT	V/FT/SEC	±10%	K <sub>B</sub>	9.2
	V/M/SEC	±10%		30.25
INDUCTANCE ****	MILLI-HENRY	±30%	L	3.4

LTR	ECO NO.	DESCRIPTION	DRN	APP'D	DATE
D	070125	ADD LEAD WIRE DESCRIPTION	JWT	MG	5/05/07
E	140060	ADD FORCE SENSITIVITY CHART	SLM	MG	02/25/14

ACTUATOR PARAMETERS *	UNITS	SYMBOL	VALUE
PEAK FORCE **	LB	F <sub>p</sub>	60.0
	N		266.9
CONTINUOUS STALL FORCE ***	LB	F <sub>cs</sub>	18.6
	N		87.74
ACTUATOR CONSTANT	LB/√WATT	K <sub>A</sub>	3.10
	N/√WATT		13.79
ELECTRICAL TIME CONSTANT	MICRO-SEC	τ <sub>E</sub>	708.0
MECHANICAL TIME CONSTANT	MILLI-SEC	τ <sub>M</sub>	1.2
POWER I <sup>2</sup> R @ F <sub>p</sub>	WATTS	P <sub>p</sub>	374.0
STROKE	± INCHES		0.225
	± MM		5.72
CLEARANCE ON EACH SIDE OF COIL	IN		0.015
	MM		0.38
THERMAL RESISTANCE OF COIL IN STILL AIR	°C/WATT	θ <sub>TH</sub>	2.4
MAX. ALLOWABLE COIL TEMP.	°C	TEMP	155
WEIGHT OF COIL ASSEMBLY	LB	WT <sub>C</sub>	0.50
	KG		0.23
WEIGHT OF FIELD ASSEMBLY	LB	WT <sub>F</sub>	2.0
	KG		0.91



\* @ 25°C AMBIENT AND MID-STROKE POSITION  
 \*\* 10 SECONDS AT 25°C AMBIENT, 155°C COIL TEMP  
 \*\*\* 25°C AMBIENT & 155°C WINDING TEMPERATURE  
 \*\*\*\* MEASURED AT 1000 Hz



6. GEOMETRIC TOLERANCE APPLIES TO PILOT HOLE ONLY.

5. THIS FEATURE FOR BEI ASSEMBLY ONLY.

4. MECHANICAL OVERTRAVEL IN THE POSITIVE (+) DIRECTION IS .015 MINIMUM.

3. A POSITIVE (+) VOLTAGE APPLIED TO THE MARKED LEAD WILL PRODUCE A FORCE ON THE COIL ASSEMBLY IN THE POSITIVE (+) DIRECTION.

2. INSULATION RESISTANCE: 100 MEGOHMS MINIMUM AT 500 VDC.

1. INTERPRET DIMENSIONS & TOLERANCES PER ANSI Y14.5M-1994.

NOTES: UNLESS OTHERWISE SPECIFIED

U.S. PATENT NO. 5,345,206

THESE COMMODITIES, TECHNOLOGY OR SOFTWARE IF EXPORTED FROM THE UNITED STATES SHALL BE IN ACCORDANCE WITH THE EXPORT ADMINISTRATION REGULATIONS. DIVERSION CONTRARY TO U.S. LAW IS PROHIBITED.

Proprietary rights of BEI Kimco are involved in the subject matter of this material and all manufacturing, reproduction, use, and sales pertaining to such subject matter are expressly reserved. This confidential and proprietary document is submitted for a specified purpose, and the recipient by accepting this material agrees that this material will not be used, copied, or reproduced in whole or in part nor its contents revealed in any manner or to any person except to meet the purpose for which it was delivered.

THIRD ANGLE PROJECTION  
 UNLESS OTHERWISE SPECIFIED:  
 -ALL DIMENSIONS ARE IN UNITS  
 -BREAK SHARP EDGES .015 MAX.  
 -SURFACE ROUGHNESS √63  
 -DIMENSIONS APPLY AFTER FINISH  
 -MAX FILLET R FILLET  
 TOLERANCES:  
 DECIMALS ANGULAR  
 .X ± .03 30°/30'  
 .XX ± .01  
 .XXX ± .005  
 DO NOT SCALE DRAWING

DRAWN R. ELLIOTT 8/23/00  
 MECH CHECK P. STAHL 11/24/04  
 APPD M. GODKIN 8/24/00  
 FILE NO. L:\TOPLEVEL\LA\ ...

**BEI** KIMCO MAGNETICS DIVISION  
 VISTA, CA 92081

LINEAR ACTUATOR

SIZE D FSCM NO. 55789 DWG NO. LA28-22-000A REV E  
 SCALE 1/1 SHEET 1 OF 1



LA28-22-000A E