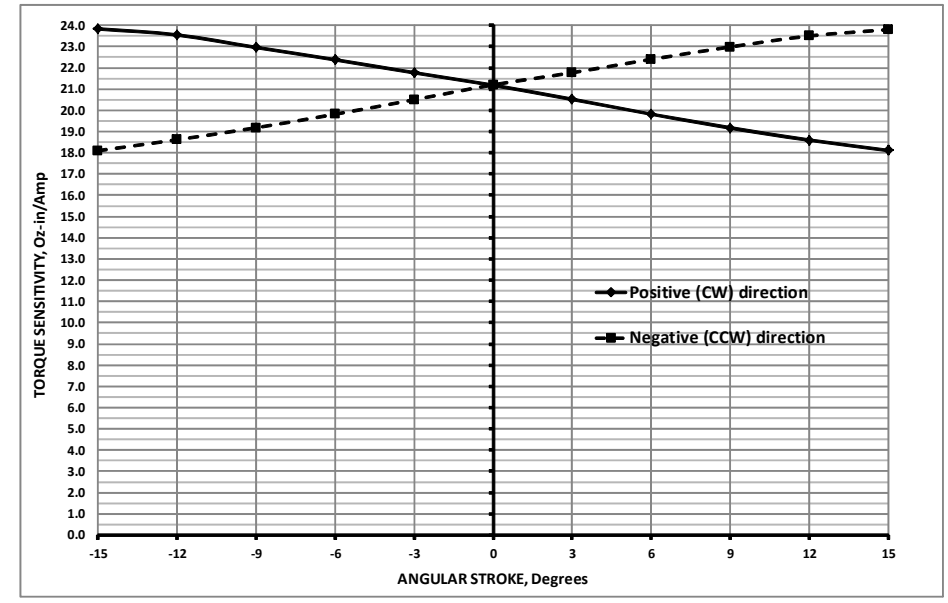


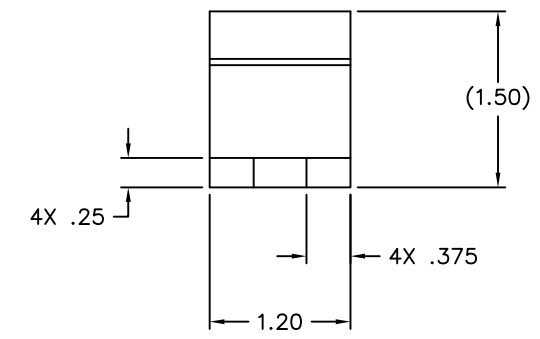
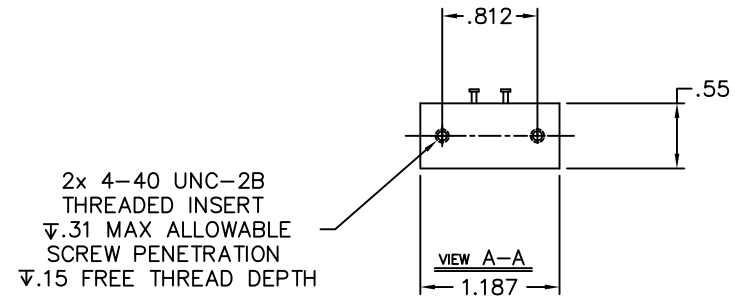
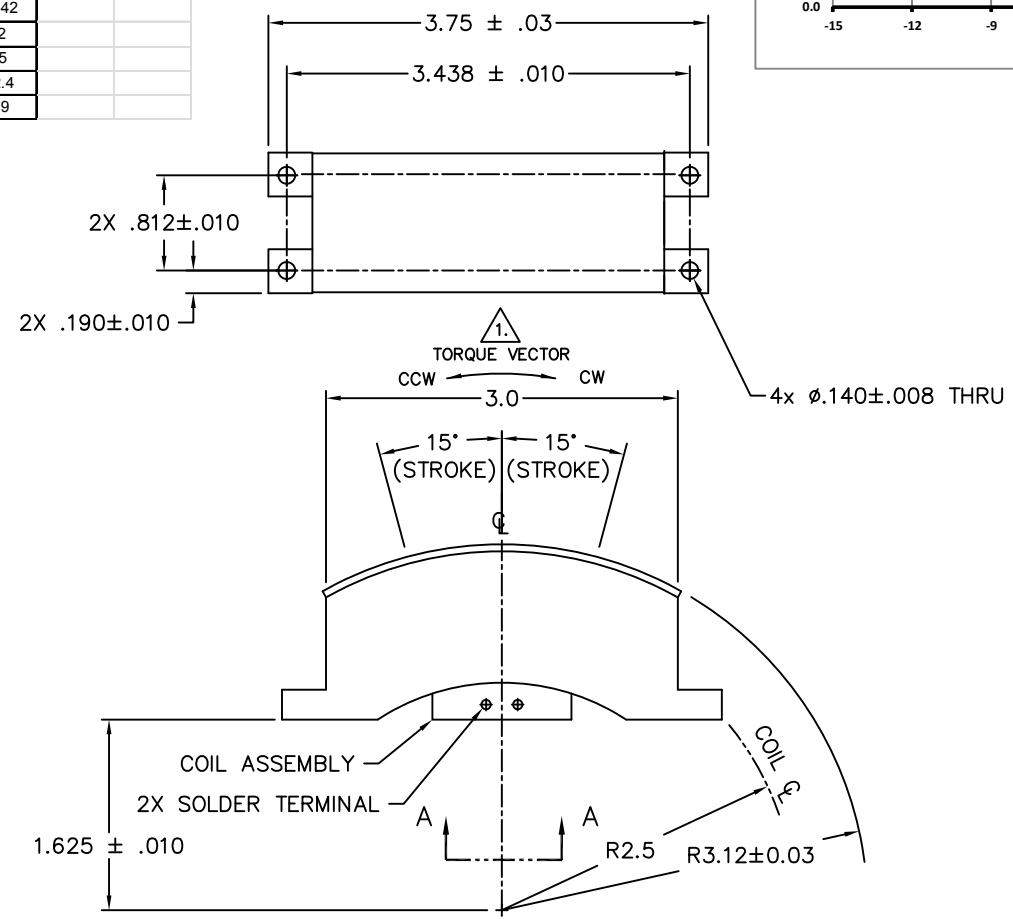
LTR	ECO NO.	DESCRIPTION	DRN	APP'D	DATE
M	070044	UPDATE DRAWING, ADDED RoHS LOGO	RG	MG	02/02/07
N	130022	UPDATE PARAMETERS, ADDED CURVE TABLE	RG	MG	01/23/13
P	130373	UPDATE PARAMETERS TABLE & VALUES	RG	MG	11/12/13

Winding Constants *	Units	Tol	Symbol	Wdg	A
DC Resistance	Ohms	± 12.5%	R		1.9
Voltage @ T _p	Volts	Nominal	V _p		10.8
Current @ T _p	Amps	Nominal	I _p		5.66
Torque Sensitivity	Nm/Amp	± 10%	K _T		0.15
Back EMF Constant	Oz-in/Amp	± 10%			21.2
Inductance ****	V/Rad/Sec	± 10%	K _B		0.15
	milli-Henry	± 15%	L		1.38

Rotary Actuator Parameters *	Units	Symbol	Value
Peak Torque **	Nm	T _p	0.847
	Oz-in		120
Continuous Stall Torque ***	Nm	T _{CS}	0.445
	Oz-in		62.9
Actuator Constant	Nm/√Watt	K _A	0.109
	Oz-in/√Watt		15.4
Electrical Time Constant	milli-sec	τ _E	0.73
Mechanical Time Constant	milli-sec	τ _M	8.44
Theoretical Angular Acceleration	rad/sec ²	α _T	8470
Max Theoretical Frequency @ Full Stroke and Sinusoidal / Triangular Motion	Hz	f _{max}	28.6/31.8
Power I ² R @ F _p	Watts	P _P	60.9
Angular Stroke	+/- Degrees		15
Clearance on each side of Coil	mm		0.38
	in		0.015
Moving Coil Inertia	Kgm ²	J _{CA}	0.0001
	Oz-in-sec ²		0.0142
Thermal Resistance of Coil in still air	°C/Watt	Θ _{TH}	5.2
Maximum Allowable Coil Winding Temp	°C	Temp	155
	G		422.4
Total Weight	Oz	W _T	14.9



* AT MID-STROKE & 25° AMBIENT TEMPERATURE
 ** 10 SECONDS AT 25°C AMBIENT & 155°C COIL TEMPERATURE
 *** 25°C AMBIENT & 155°C WINDING TEMPERATURE
 **** MEASURED AT 1000 Hz.



1. A POSITIVE (+) VOLTAGE APPLIED TO THE (+) TERMINAL WILL PRODUCE A TORQUE ON THE COIL ASSEMBLY IN THE CW DIRECTION WHEN VIEWED FROM THE TERMINAL SIDE.

NOTES: UNLESS OTHERWISE SPECIFIED

THESE COMMODITIES, TECHNOLOGY OR SOFTWARE IF EXPORTED FROM THE UNITED STATES SHALL BE IN ACCORDANCE WITH THE EXPORT ADMINISTRATION REGULATIONS. DIVERSION CONTRARY TO U.S. LAW IS PROHIBITED.

Proprietary rights of BEI Kimco are involved in the subject matter of this material and all manufacturing, reproduction, use, and sales pertaining to such subject matter are expressly reserved. This confidential and proprietary document is submitted for a specified purpose, and the recipient by accepting this material agrees that this material will not be used, copied, or reproduced in whole or in part nor its contents revealed in any manner or to any person except to meet the purpose for which it was delivered.

THIRD ANGLE PROJECTION
 UNLESS OTHERWISE SPECIFIED:
 -ALL DIMENSIONS ARE IN INCHES
 -BREAK SHARP EDGES .015 MAX.
 -SURFACE ROUGHNESS √63
 -DIMENSIONS APPLY AFTER FINISH
 -MAX FILLET R .010
 TOLERANCES:
 DECIMALS ANGULAR
 .X ± .03 ±0° 30'
 .XX ± .01
 .XXX ± .005
 DO NOT SCALE DRAWING
 USED ON:

BEI KIMCO MAGNETICS DIVISION
 VISTA, CA 92081

DRAWN WIEDENHAMMER	DATE 12/15/82	TITLE ROTARY ACTUATOR
MECH CHECK GUERRERO	DATE 01/18/07	
APPD J.K	DATE 12/17/82	
FILE NO. L:\TOP LEVEL\RA\...	SIZE C	FSCM NO. 55789
	DWG NO. RA60-10-001A	REV P
	SCALE 2/1	SHEET 1 OF 1

RA60-10-001A